



Stuvamac India Pvt. Ltd.

Organised Mechanical Commitment

Exit

Home

Profile

Other Facilities

Quality

Products

Our Clients

Feedback Form

Contact





Profile

Stuvamac India Pvt Ltd is an engineering dedication for achieving manufacturing excellence in precision and power generation components. Our business models aims at aloft ideals and the ubiquitous growth through Innoavative manufacturing.

Customized solutions, Industrial effectiveness are our value drivers.

Quality to customers is our business foundation.

The Team

Stuvamac is envisioned by engineering techocrat with 2 decades of Hands-on expertise in handling 4th generation CNC machines in International and domestic arena.

With Quest to create a professional engineering destination matching international standards, the entrepreneurship has been initiated to meet the best industry practices and elate customers by achieving the pinnacle of performance in Quality, Delivery, and service needs to the customer.

The vision is supported by matched skill sets in management and techical sides of the business process. The organizational matrix is optimal to the current business plans of the organization which will be enhanced qualitatively upon requirements.

Capability Profile

Hands-on expertise in 4th generation CNC machines and machining centers.

Epxert in process control and process reengineering, designing fixtures to meet air gauge tolerances and accuarcy.

Reverse engineering on products, modeling and prototyping.

Competent in understanding international drawings and customer requirements.

Skilled in operating all tool room machines such as Milling, Surface Grinding, Cylindrical grinding lathe and SPM's



Other Facilities

- Design Department with latest software for modeling and designing with qualified Engineers.
- Reverse Engineering with material testing and analyzing facility.
- Tooling and Fixture Design

Enclosed

- Our Manufacturing facility
- Our Measuring Instruments and Equipment and
- Generator Facility.



IN HOUSE FACILITY

Sl. No	Machine Details	Make/Model	Specification	Qty.
I. CNC Machines				
1.	Vertical Machining Centre	YCM - TV116B	1200 x 600 x 850mm with 4th axis	1
2.	Vertical Turing Lathe- CNC	Honor - VL86A	860 x 810 mm	1



Quality Profile :

Vision :

Unsurpassed value commitment to customers through Innovative Manufacturing and Business Solutions committing industrial uprightness and social perception.

Mission :

Maximize value for customers by setting standards for world class performance.

Quality Policy :

Achievement of Right Quality, Right Cost, Right Delivery & Right Service to Customer through professional acumen, organized commitment, sustained team inputs and constant value enrichment.

Augmentation Plans with INDICATIVE Time – Limits

ERP / MIS - Feb 2013

ISO 9001 : 2008 - April 2013

ISO 50001 : 2011 - Nov 2013

[INSTRUMENTS](#)



Instruments

S.No	Instruments List	Make	Range	Qty
1	VERNIER	Mitutoyo	0-300 mm	2
2	VERNIER	Mitutoyo	0-600 mm	1
3	DIAL VERNIER	Mitutoyo	0-300 mm	1
4	DIAL VERNIER	Mitutoyo	0-150 mm	1
5	DIGIMATIC VERNIER	Mitutoyo	0-300 mm	1
6	DEPTH VERNIER	Mitutoyo	0-300 mm	2
7	MICROMETER	Mitutoyo	0-25 mm	2
8	MICROMETER	Mitutoyo	25-50 mm	2
9	MICROMETER	Mitutoyo	50-75 mm	2
10	MICROMETER	Mitutoyo	75-100 mm	2
11	MICROMETER	Mitutoyo	0-150 mm	1
12	MICROMETER	Mitutoyo	150-300 mm	1
13	MICROMETER	Mitutoyo	300-400 mm	1
14	DEPTH MICROMETER	Mitutoyo	0-25 mm	1

[Back](#)[Next](#)



S.No	Instruments List	Make	Range	Qty
15	UNIVERSAL BEVEL PROTRACTOR	Mitutoyo	-	1
16	RADIUS GAUGE	Mitutoyo	1-7 mm	1
17	RADIUS GAUGE	Mitutoyo	7.5-15 mm	1
18	THREAD PITCH GAUGE	Mitutoyo	0.4-7 mm	1
19	Bore Dial Gauges	Mitutoyo	10-18 mm	1
20	Bore Dial Gauges	Mitutoyo	18-35 mm	1
21	Bore Dial Gauges	Mitutoyo	35-60 mm	1
22	Bore Dial Gauges	Mitutoyo	50-150 mm	1
23	Bore Dial Gauges	Mitutoyo	160-250 mm	1
24	Bore Dial Gauges	Mitutoyo	250-450 mm	1
25	Vernier Height Gauge	Mitutoyo	0-600 mm	1
26	Sprit Level	Japan	150 mm	1
27	Inside Micrometer	Mitutoyo	50-1000 mm	1
28	Magnetic Dial Stand			3
29	Plunger Dial		0.01	1
30	Plunger Dial		0.001	1
31	Lever Dial		0.01	2
32	Tri Square			2
33	Granite Surface table 2m x 1m	Alpha		1

[Back](#)



Stuvamac India Pvt. Ltd.

Organised Mechanical Commitment

Exit 

[Home](#)

[Profile](#)

[Other Facilities](#)

[Quality](#)

[Products](#)

[Our Clients](#)

[Feedback Form](#)

[Contact](#)



CNC Machined Components



CNC Turned Components



Tool Room



General Engineering





CNC Machined Components

We manufacture components using 4th axes machining center. The raw materials we use are cast -steel, cast iron, forged steel, alloy steel, and high quality rolled Ferrous & Non ferrous metals from standard suppliers, which ensure durability and performance.

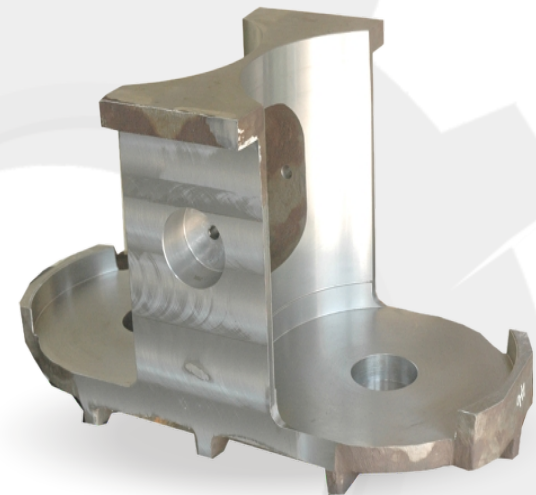
Application:

Our CNC components are used in :

Automobile, defense, energy / Power sector, Textile, and other industrial applications.

Types of components manufactured:

- Base plate
- Bearing housings
- Bonnet
- Cam shaft thrust bearing
- Cylinder head
- Ejector
- Gear boxes
- Machine frame
- Pump bodies
- Spring base
- Square carrier
- Valve bodies





CNC Turned Components

We manufacture components using High Precision Turning center. We use fine quality raw materials like stainless steel, alloy steels, Tool steels, Low carbon steels, aluminum, and ferrous & non ferrous metals from well recognized suppliers.

Application :

Our Turned Components are used in Aerospace, Automobile, Construction Industries, Defence, Energy, General Engineering, Textile, etc.

Types of components manufactured:

- Adaptor
- Anchor cone
- Bush cylinder gas
- Cap nut
- Climbing cone
- Flanges
- Lapping ring
- Pivot Bush
- Pivot Pins
- Pump gear
- Rings
- Shafts
- Spline coupling





Stuvamac India Pvt. Ltd.

Organised Mechanical Commitment

Exit 

[Home](#)[Profile](#)[Other Facilities](#)[Quality](#)[Products](#)[Our Clients](#)[Feedback Form](#)[Contact](#)

Tool Room

We manufacture Tools & Dies, Tool Engineering components and Jig boring job works by using well recognized Jig boring and conventional machine Tools.

Our Tool Room Products are :



Jig & Fixtures



Machined Parts



Tool Engineering Components





Jig & Fixtures

Our company holds great recognition in the market as a manufacturer and supplier of jigs and fixtures. The company offers a variety of jigs & fixtures, made out of jig boring machine, CNC turning center, CNC machining center and conventional machines.

Our professionals have immense experience in manufacturing and supplying the following:

Hydraulic / Pneumatic / Mechanical Clamping Jigs & Fixtures For Higher Productivity, As Per Customer's Requirements

Jigs And Fixtures For CNC Turning, VMC, HMC, VTI

Jigs And Fixtures For Gang Milling, Spms, Etc., Used For Automobile Components Manufacturing.

Fixtures For Milling, Broaching, Grinding And Conventional Machines

Different Varieties Of Fixtures For Inspection Purposes



Machined Parts

We offer non standard jobs, import substitute, any development jobs with a small batch quantity made by special materials like phosphorous bronze, stainless steel, tool / alloy steel using in-house jig boring machines, CNC & conventional machines as per customer's specification with superior quality.

Few of our components are:

Bending former

Carrier fourth planetary

Centre Tip

Chain case assy

Clamping jaw

Gas shield assembly

Mounting blocks

Pin- bigger

Pitch plate

Plunger block pin.

Release ring

Scalloped bar

Strap

[Back](#)[Next](#)



Stuvamac India Pvt. Ltd.

Organised Mechanical Commitment

Exit 

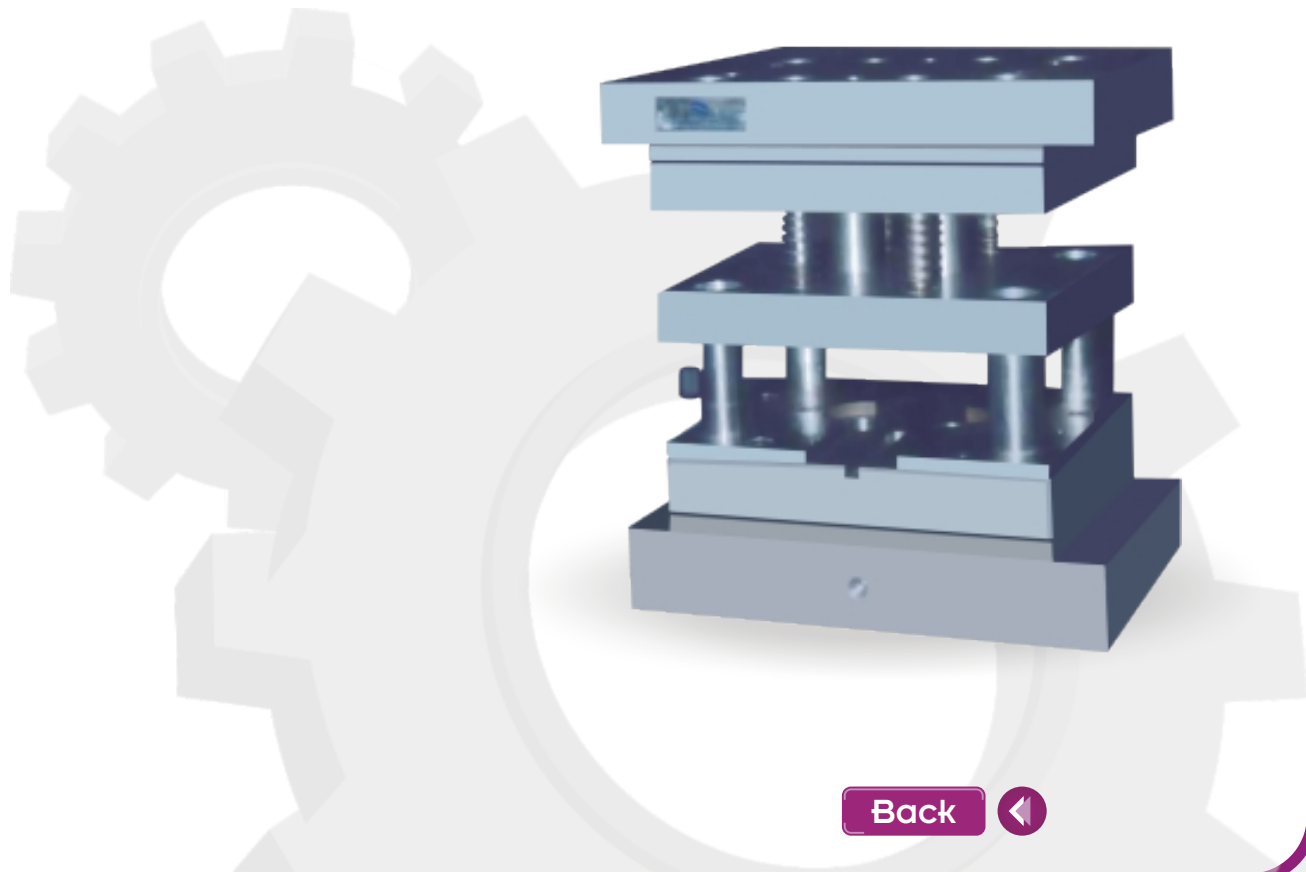
[Home](#)[Profile](#)[Other Facilities](#)[Quality](#)[Products](#)[Our Clients](#)[Feedback Form](#)[Contact](#)

Tool Engineering Components

We manufacture & supply Tool Engineering jobs as per our customer's needs with superior quality raw materials.

Few of our components are

- Booster Jaws
- Follower Jaws
- Hook Spanners
- Hydraulic Testing Plugs
- PSSF Mandrels
- Spacer Sleeves
- Stay Bolts
- Stems
- Studs
- Tool Holders
- Tube Feed Rollers

[Back](#)



Stuvamac India Pvt. Ltd.

Organised Mechanical Commitment

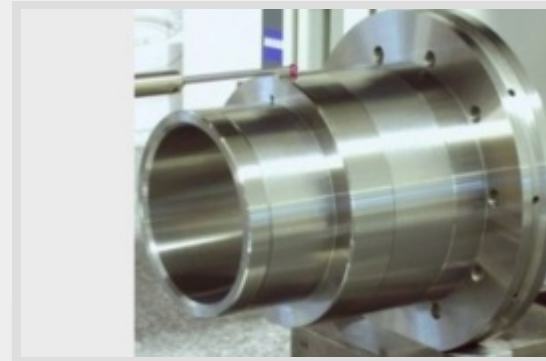
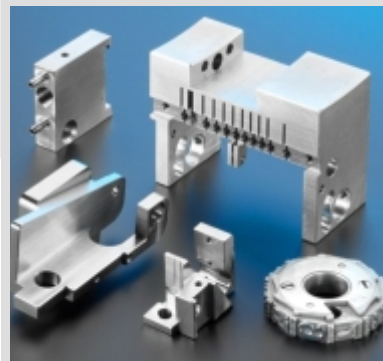
Exit 

[Home](#)[Profile](#)[Other Facilities](#)[Quality](#)[Products](#)[Our Clients](#)[Feedback Form](#)[Contact](#)

General Engineering

Precision Machined Components

Stuvamac India Pvt. Ltd. is a manufacturer of precision machined components to aerospace, medical, Oil and gas, Power generation, Automobile and other high technology industries. They are highly engineered products supplied by a diverse base of manufacturers. Stuvamac India Pvt. Ltd. works to customer drawings and specification requirements to develop the process, necessary to produce complete parts from various metals.



Next



Stuvamac India Pvt. Ltd.

Organised Mechanical Commitment

Exit

[Home](#)

[Profile](#)

[Other Facilities](#)

[Quality](#)

[Products](#)

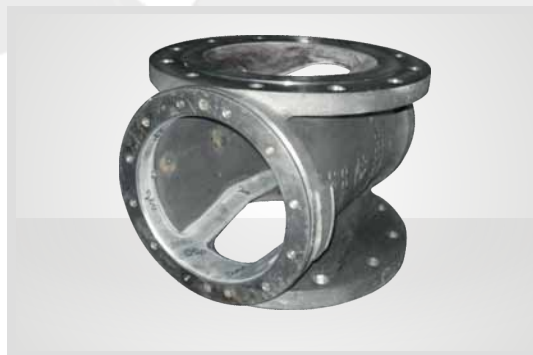
[Our Clients](#)

[Feedback Form](#)

[Contact](#)



General Engineering



[Back](#)





Stuvamac India Pvt. Ltd.

Organised Mechanical Commitment

Exit

[Home](#)

[Profile](#)

[Other Facilities](#)

[Quality](#)

[Products](#)

[Our Clients](#)

[Feedback Form](#)

[Contact](#)



L&T Valves



VALVEWORKS USA



L&T Heavy Engineering Division





Stuvamac India Pvt. Ltd.

Organised Mechanical Commitment

Exit 

[Home](#)

[Profile](#)

[Other Facilities](#)

[Quality](#)

[Products](#)

[Our Clients](#)

[Feedback Form](#)

[Contact](#)

Name

Company

Position

Address

Email ID

Phone No.

Describe your requirements :

Press Submit
Then Press ALLOW to Send



Stuvamac India Pvt. Ltd.

Organised Mechanical Commitment

Exit 

[Home](#)[Profile](#)[Other Facilities](#)[Quality](#)[Products](#)[Our Clients](#)[Feedback Form](#)[Contact](#)

Registered Office :

1/246, Rangammal Colony,
NGGO Colony Post, Coimbatore - 641 022.

Works :

No. 67/1, Sri Jaganathan Industrial Estate,
Athipalayam Road, Chinnavedampatti,
Coimbatore - 641 049.

Tele Fax : 0422 - 4388558

E-mail : info@stuvamac.com
: muthukumaran.r@stuvamac.com

Web : www.stuvamac.com



TIN No.	: 33642029416
PAN No.	: AARCS1675D
IE Code	: 3212002808
Our Bank	: Indian Overseas Bank
Account No.	: 061602000020507
IFSC Code	: IOBA0000616
Branch Code	: 0616