

ENTER





Premier Plate Fabrications Co.

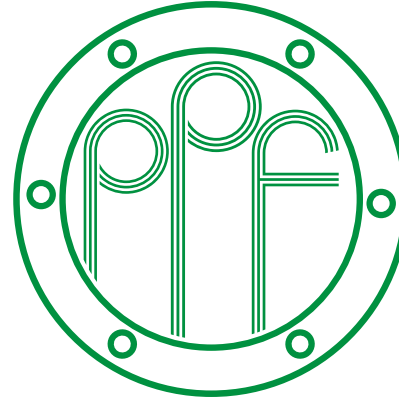
| [Home](#) | [Gallery](#) | [Contact](#) | [Exit](#) |

[Profile](#)

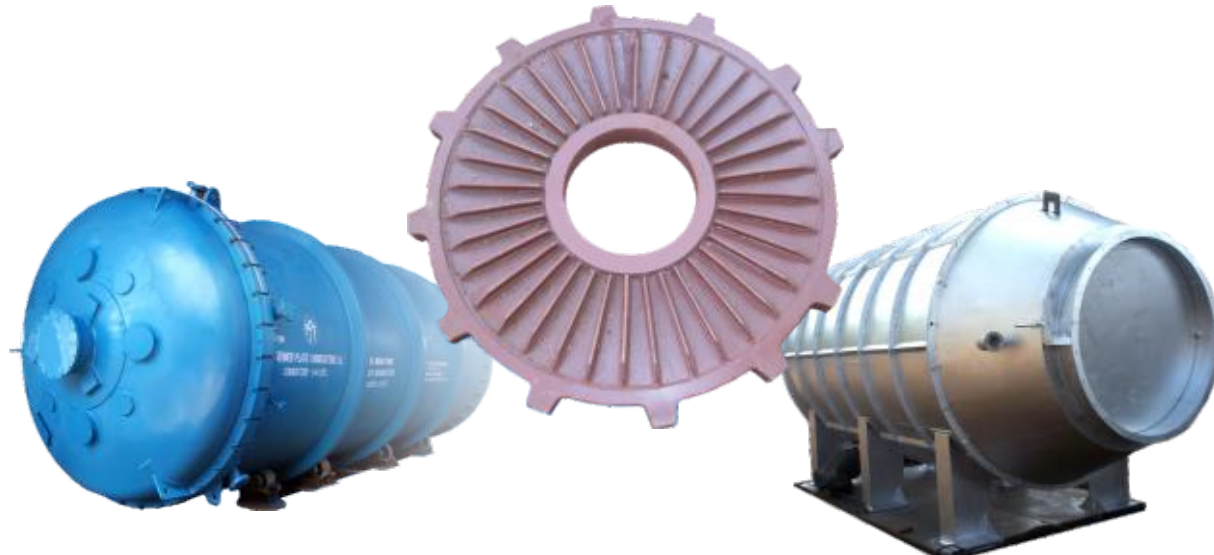
[Machinery List](#)

[Our Clientele](#)

Heavy Fabrication
Pressure Vessels



Heat Exchangers
Heavy Structures



Click on the buttons to get information of the specific Topic



Premier Plate Fabrications Co.

[| Home](#) | [Gallery](#) | [Contact](#) | [Exit](#) |

Profile

Machinery List

Our Clientele

Profile

Premier Plate Fabrication Co., Headed by **Mr.S.M.Sadhasivam** is a leading fabricator in South India for fabricating Pressure Vessels, Heat Exchangers, heavy Structures etc. The Company supplies equipments and spares etc; to various Government, Public sector, Quasi- Government undertakings. The Company is an ISO 9001/2000 certified organization having certified by M/s. TUV Suddeutschland India Pvt. Ltd.,

The Managing partner of our company Mr. S.M. SADHASIVAM is having vast knowledge and experience in heavy fabrication for the past 30 years and he has started this company during 1980, which is performing well as an outstanding fabrication industry in South India.

PPF is small-scale industry having registration with the following agencies and Government organisations.

- 1) SSI Registration No: 331209194 dt. 29.05.81 with Department of Industries and Commerce
- 2) NSIC Registration No: NSIC/CBE/G/017(2406)/88 dt. 30.11.2004 with National small Industries Corporation Ltd.,
- 3) DEFENCE Registration: CQAV/PNC/P-387/IV-6 with Controller ate of Quality Assurance Vehicle – Ahmednagar.
- 4) Indian Boiler Registration No: A&E/3067-M/2005 with Chief inspector of Boilers – Chennai.



Premier Plate Fabrications Co.

[| Home](#) | [Gallery](#) | [Contact](#) | [Exit](#) |

[Profile](#)

[Machinery List](#)

[Our Clientele](#)

Machinery List

Sl.No.	Descriptions	Specification / Capacity	Make	QTY
GAS CUTTING				
1.	Cutageon No. 5		Indian Oxygen Ltd	6 Nos.
2.	Pug Cutting Machines		Indian Oxygen Ltd	5 Nos.
3.	Flamingo - Profile Gas cutting M/c		Indian Oxygen Ltd	2 Sets
WELDING				
4.	AC Welding Transformer	450 Amps	Manju Electric Works	4 Nos.
5.	AC Welding Transformer	400 Amps	Manju Electric Works	6 Nos.
6.	DC Welding Generator	320 Amps	Advani Overlikon	2 Nos.
7.	DC Welding Rectifier	300 Amps	Esab, Kirlosker etc.,	4 Nos.
8.	MIG/TIG Welding set	400 Amps	Advani Overlikon	2 Sets
9.	MIG Welding set	400 Amps	Kanubhai	1 Set
10.	MIG Welding set	400 Amps	Karnataka Welding Products	1 Set
11.	MIG Welding set	400 Amps	Ultra Make	1 Set
GENERAL				
12.	Power Generator	63 KVA	Kirlosker	1 Set
13.	Hand shearing Machine	6mm Thick	R.K.Brand	1 No.
14.	Heating furnace with power Blower	4' x 3' with 3 HP Motor	Wesman EnggCo.	1 No.
15.	Heat Treatment Furnace (Stress Relieving, rolling & Pressing)	3500mm dia x 2600mm depth pit (Bentone)furnace	Heatran Service	1 No.

Click on the buttons to get information of the specific Topic



Premier Plate Fabrications Co.

[| Home](#) | [Gallery](#) | [Contact](#) | [Exit](#) |

[Profile](#)

[Machinery List](#)

[Our Clientele](#)

Machinery List

Sl.No.	Descriptions	Specification / Capacity	Make	QTY
16.	Plate bending machine	20 x 1500mm Cold rolling	Self make	1 No.
17.	Plate bending machine	32 x 1000mm cold rolling	Modern Engg Co	1 No.
18.	Plate bending machine	40 x 3000 width	Self make	1 No.
19.	Plate bending machine 50 x 1000mm	30 HP Motor	Self make	1 No.
20.	Fly Press		R.K.Brand	1 No.
21.	Hydraulic Press	500 tonne capacity 300mm Ram size 1950x 400 x 1790 (day) Table size: 1950 x 1120	Siempelkemp West Germany	1 No.
22.	Heavy duty Hydraulic Press	1000 tonne capacity Table size: 1900 x 1150 450mm dia ram size 150thk plate x 2000 kg (single piece pressing) 1800 x 50thk (Cold operation Single piece pressing) 1800 & 100 thk (Hot pressing)	John Saw & Sons England Make	1 No.
23.	Heavy duty Hydraulic Press	Hyd. Press 600 tonne Daylight - 1 Metre x 1 Metre x 1 Metre	Univesel Machines New Delhi	1 No.

Click on the buttons to get information of the specific Topic



Premier Plate Fabrications Co.

[| Home](#) | [Gallery](#) | [Contact](#) | [Exit](#) |

[Profile](#)

[Machinery List](#)

[Our Clientele](#)

Machinery List

Sl.No.	Descriptions	Specification / Capacity	Make	QTY
24.	Heavy duty Hydraulic Press	C type - Hydraulic press 12 x 2500mm bending	Self make	1 No.
GRINDING				
25.	Pedestal grinder	10" O Wheel	Self make	3 Nos.
26.	Ralli wolf angle grinder	AG 7	Wolf	14 Nos.
27.	Ralli wolf angle grinder	GQ 6	Wolf	10 Nos.
28.	Ralli sander machine	HS 7	Wolf	5 Nos.
29.	Mini grinder	AG 5	Wolf	4 Nos.
30.	Surface grinding machine	1000 x 1500mm	Self make	1 No.
31.	Web Tool grinder	AG 7	Web Tool	3 Nos.
32.	Mikida Grinder	AG 7	Mikida	5 Nos.
DRILLING				
33.	Pillar type drilling machine	1" Capacity	Shiv Machine Tools	1 No.
34.	Portable drilling machine	½ " Capacity	Wolf	2 Nos.
35.	Drilling machine	1" Capacity	Raj machine Tools	1 No.
36.	Drilling machine	1 ½" Capacity	Shiv Machine Tools	1 No.
37.	Radial drilling machine	1 ½" Capacity	Raj Machine Tools	1 No.
38.	Radial drilling machine	2" Capacity	Massey Harrish	1 No.
39.	Radial drilling machine	2 ½" Capacity	Jupiter make	1 No.

Click on the buttons to get information of the specific Topic



Premier Plate Fabrications Co.

[| Home](#) | [Gallery](#) | [Contact](#) | [Exit](#) |

[Profile](#)

[Machinery List](#)

[Our Clientele](#)

Machinery List

Sl.No.	Descriptions	Specification / Capacity	Make	QTY
40.	Radial drilling machine Double running type	1 ½" Capacity	CKP Machine tools	1 No.
MACHINING				
41.	Center Lathe	8" Center height	Madras machine Tools	1 No.
42.	Center Lathe	10" center height	Batala	1 No.
HANDLING FACILITY				
43.	A Type frame fitted with chain pulley & sliding block	3 Tonne	Indef make	2 Nos.
44.	Jib crane	2.5 Tonne	Self	3 Nos.
45.	Jib crane	1 Tonne	MM Engineering	1 No.
46.	Jib crane	3 Tonne	Self	1 No.
47.	Hand operated crane	5 Tonne	MM Engineering	1 No.
48.	Gantry cranes chain pulley block & pulley & sliding block	10 Tonne	MM Engineering	2 Nos.
49.	E.O.T. Crane for fabrication shop 8C	25 Tonne	Chitram & Co / Chennai	1 No.
50.	E.O.T. crane for Hydraulic press	3 Tonne	K.M. Engineering	1 No.
51.	8 Tonne capacity ESCORTS	8 Tonne	ESCORTS	1 No.
52.	Sandblasting - HD Air Compressor	30 HP	Ingersoll Rand	1 Set
53.	Heat Exchanger expanding unit with grooving tools and with torque control	for expanding 10-19 mm 0.25mm, 0-16mm	Power master - Bombay	Each 2 Sets

Click on the buttons to get information of the specific Topic



Profile

Machinery List

Our Clientele

Machinery List

Sl.No.	Descriptions	Specification / Capacity	Make	QTY	YEAR
I	INSPECTION DEPARTMENT				
	MEASURING INSTRUMENTS				
1	Vernier Height Gauge	0-600 MM	Mitutoyo - Japan	2 No	1998
2	Vernier Height Gauge	0-600 MM	Mitutoyo - Japan	2 No	1998
3	Cylinder gauge (Bore Dial gauge)	50-150 MM	Mitutoyo - Japan	1 No	1999
4	Bore dial gauge	.0.35 MM	Mitutoyo - Japan	1 No	1999
5	Bore dial gauge	50-100 MM	Mitutoyo - Japan	1 No	1999
6	Bore dial gauge	100-250 MM	Mitutoyo - Japan	1 No	1999
7	Bore dial gauge	0.-300 MM	Mitutoyo - Japan	2 No	1996
8	Vernier Caliper	0-1500 mm	Mitutoyo - Japan	1 No	2005
9	Vernier Caliper	0-600 mm	Mitutoyo - Japan	1 No	2006
10	Vernier Caliper	0-150 MM	Mitutoyo - Japan	2 No	2006
11	Vernier Caliper	0-150 MM	Mitutoyo - Japan	1 No	2006
12	Vernier Caliper	0-300 MM	Mitutoyo - Japan	1 No	2006
13	Cast Iron Surface plate	1m x 1 m	Mini Machine Tools	1 No	2001
14	Cast Iron Surface plate	2 m x 2.75 mm	Mini Machine Tools	1 No	2000



Profile

Machinery List

Our Clientele

Machinery List

Sl.No.	Descriptions	Specification / Capacity	Make	QTY	YEAR
15	Straight Edge	1500 Long mm	Self Make	1 No	2002
16	Straight Edge	2000 mm	Self Make	1 No	2000
17	TRI Square	1 meter size	Mitutoyo - Japan	1 No	2000
18	Thread plug gauges for	From M5 to Max	Mini Machine Tools	1 No	2000
	different sizes	M 120 ring gauge			
19					
	Metric, British NPT, threads				
II	MICROMETERS	300-400	Mitutoyo - Japan	1 No	1998
20	"	0-50	Mitutoyo - Japan	1 No	1998
21	"	50-150	Mitutoyo - Japan	1 No	1998
22	"	175-200	Mitutoyo - Japan	1 No	1998
23	"	200-300	Mitutoyo - Japan	1 No	1999
24	"	150-175	Mitutoyo - Japan	1 No	1999



Premier Plate Fabrications Co.

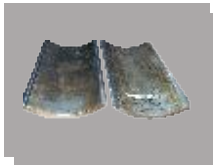
[| Home](#) | [Gallery](#) | [Contact](#) | [Exit](#) |

Profile

Machinery List

Our Clientele

Gallery



Click on the buttons to get information of the specific Topic



Premier Plate Fabrications Co.

| [Home](#) | [Gallery](#) | [Contact](#) | [Exit](#) |

[Profile](#)

[Machinery List](#)

[Our Clientele](#)

Gallery



[<< Back to Gallery](#)

Click on the buttons to get information of the specific Topic



Premier Plate Fabrications Co.

[| Home](#) | [Gallery](#) | [Contact](#) | [Exit](#) |

[Profile](#)

[Machinery List](#)

[Our Clientele](#)

Gallery



[<< Back to Gallery](#)

Click on the buttons to get information of the specific Topic



Gallery

[Profile](#)

[Machinery List](#)

[Our Clientele](#)



[<< Back to Gallery](#)



Premier Plate Fabrications Co.

| [Home](#) | [Gallery](#) | [Contact](#) | [Exit](#) |

[Profile](#)

[Machinery List](#)

[Our Clientele](#)

Gallery



[<< Back to Gallery](#)

Click on the buttons to get information of the specific Topic



Premier Plate Fabrications Co.

| [Home](#) | [Gallery](#) | [Contact](#) | [Exit](#) |

[Profile](#)

[Machinery List](#)

[Our Clientele](#)

Gallery



[<< Back to Gallery](#)

Click on the buttons to get information of the specific Topic



Premier Plate Fabrications Co.

[| Home](#) | [Gallery](#) | [Contact](#) | [Exit](#) |

[Profile](#)

[Machinery List](#)

[Our Clientele](#)

Gallery



[<< Back to Gallery](#)

Click on the buttons to get information of the specific Topic



Gallery

[Profile](#)

[Machinery List](#)

[Our Clientele](#)



[<< Back to Gallery](#)



Premier Plate Fabrications Co.

[| Home](#) | [Gallery](#) | [Contact](#) | [Exit](#) |

[Profile](#)

[Machinery List](#)

[Our Clientele](#)

Gallery



[<< Back to Gallery](#)

Click on the buttons to get information of the specific Topic



Premier Plate Fabrications Co.

| [Home](#) | [Gallery](#) | [Contact](#) | [Exit](#) |

[Profile](#)

[Machinery List](#)

[Our Clientele](#)

Gallery



[<< Back to Gallery](#)

Click on the buttons to get information of the specific Topic



Premier Plate Fabrications Co.

| [Home](#) | [Gallery](#) | [Contact](#) | [Exit](#) |

[Profile](#)

[Machinery List](#)

[Our Clientele](#)

Gallery



[<< Back to Gallery](#)

Click on the buttons to get information of the specific Topic



Premier Plate Fabrications Co.

| [Home](#) | [Gallery](#) | [Contact](#) | [Exit](#) |

[Profile](#)

[Machinery List](#)

[Our Clientele](#)

Gallery



[<< Back to Gallery](#)

Click on the buttons to get information of the specific Topic



Premier Plate Fabrications Co.

| [Home](#) | [Gallery](#) | [Contact](#) | [Exit](#) |

[Profile](#)

[Machinery List](#)

[Our Clientele](#)

Gallery



[<< Back to Gallery](#)

Click on the buttons to get information of the specific Topic



Profile

Machinery List

Our Clientele

Gallery



[<< Back to Gallery](#)



Premier Plate Fabrications Co.

| [Home](#) | [Gallery](#) | [Contact](#) | [Exit](#) |

[Profile](#)

[Machinery List](#)

[Our Clientele](#)

Gallery



[<< Back to Gallery](#)

Click on the buttons to get information of the specific Topic



Premier Plate Fabrications Co.

| [Home](#) | [Gallery](#) | [Contact](#) | [Exit](#) |

[Profile](#)

[Machinery List](#)

[Our Clientele](#)

Gallery



[<< Back to Gallery](#)

Click on the buttons to get information of the specific Topic



Premier Plate Fabrications Co.

| [Home](#) | [Gallery](#) | [Contact](#) | [Exit](#) |

[Profile](#)

[Machinery List](#)

[Our Clientele](#)

Gallery



[<< Back to Gallery](#)

Click on the buttons to get information of the specific Topic



Premier Plate Fabrications Co.

[| Home](#) | [Gallery](#) | [Contact](#) | [Exit](#) |

[Profile](#)

[Machinery List](#)

[Our Clientele](#)

Gallery



[<< Back to Gallery](#)

Click on the buttons to get information of the specific Topic



Premier Plate Fabrications Co.

[| Home](#) | [Gallery](#) | [Contact](#) | [Exit](#) |

[Profile](#)

[Machinery List](#)

[Our Clientele](#)

Gallery



[<< Back to Gallery](#)

Click on the buttons to get information of the specific Topic



Premier Plate Fabrications Co.

| [Home](#) | [Gallery](#) | [Contact](#) | [Exit](#) |

[Profile](#)

[Machinery List](#)

[Our Clientele](#)

Gallery



[<< Back to Gallery](#)

Click on the buttons to get information of the specific Topic



Premier Plate Fabrications Co.

[| Home](#) | [Gallery](#) | [Contact](#) | [Exit](#) |

[Profile](#)

[Machinery List](#)

[Our Clientele](#)

Gallery



[<< Back to Gallery](#)

Click on the buttons to get information of the specific Topic



Gallery

[Profile](#)

[Machinery List](#)

[Our Clientele](#)



[<< Back to Gallery](#)



Premier Plate Fabrications Co.

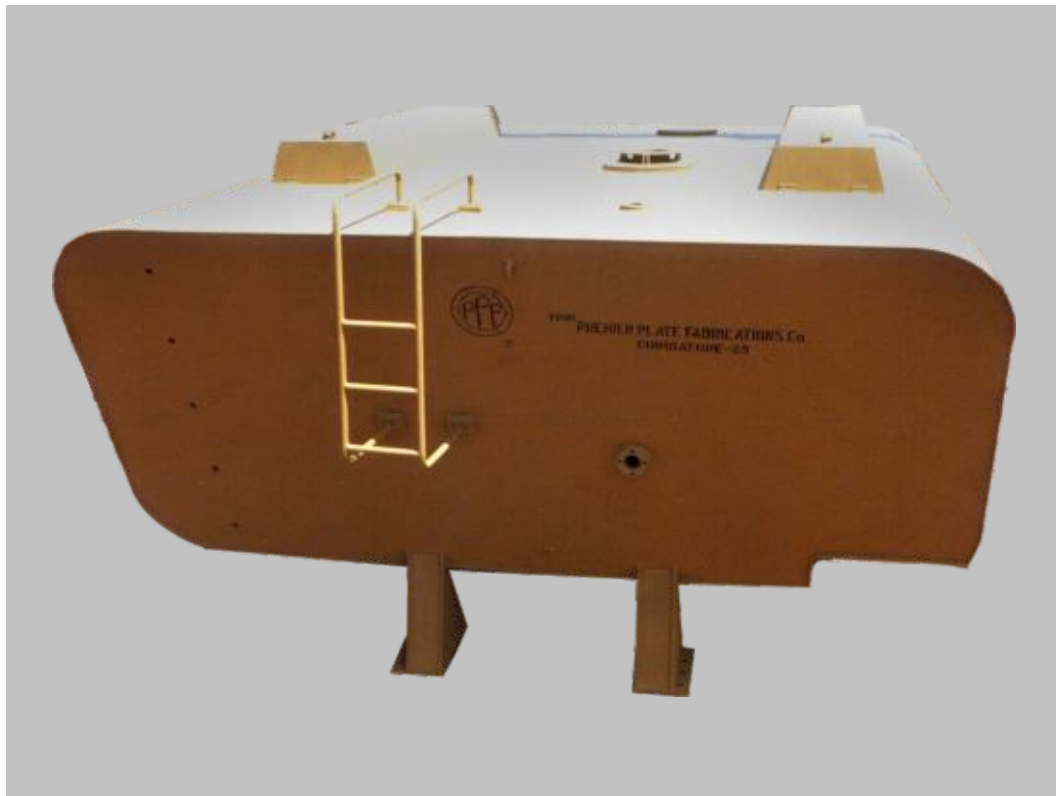
| [Home](#) | [Gallery](#) | [Contact](#) | [Exit](#) |

[Profile](#)

[Machinery List](#)

[Our Clientele](#)

Gallery



[<< Back to Gallery](#)

Click on the buttons to get information of the specific Topic



Premier Plate Fabrications Co.

| [Home](#) | [Gallery](#) | [Contact](#) | [Exit](#) |

[Profile](#)

[Machinery List](#)

[Our Clientele](#)

Gallery



[<< Back to Gallery](#)

Click on the buttons to get information of the specific Topic



Premier Plate Fabrications Co.

| [Home](#) | [Gallery](#) | [Contact](#) | [Exit](#) |

[Profile](#)

[Machinery List](#)

[Our Clientele](#)

Gallery



[<< Back to Gallery](#)

Click on the buttons to get information of the specific Topic



Premier Plate Fabrications Co.

[| Home](#) | [Gallery](#) | [Contact](#) | [Exit](#) |

[Profile](#)

[Machinery List](#)

[Our Clientele](#)

Gallery



[<< Back to Gallery](#)

Click on the buttons to get information of the specific Topic



Gallery

[Profile](#)

[Machinery List](#)

[Our Clientele](#)



[<< Back to Gallery](#)



Premier Plate Fabrications Co.

[| Home](#) | [Gallery](#) | [Contact](#) | [Exit](#) |

[Profile](#)

[Machinery List](#)

[Our Clientele](#)

Gallery



[<< Back to Gallery](#)

Click on the buttons to get information of the specific Topic



Premier Plate Fabrications Co.

| [Home](#) | [Gallery](#) | [Contact](#) | [Exit](#) |

[Profile](#)

[Machinery List](#)

[Our Clientele](#)

Gallery



[<< Back to Gallery](#)

Click on the buttons to get information of the specific Topic



Premier Plate Fabrications Co.

| [Home](#) | [Gallery](#) | [Contact](#) | [Exit](#) |

[Profile](#)

[Machinery List](#)

[Our Clientele](#)

Gallery



[<< Back to Gallery](#)

Click on the buttons to get information of the specific Topic



Premier Plate Fabrications Co.

| [Home](#) | [Gallery](#) | [Contact](#) | [Exit](#) |

[Profile](#)

[Machinery List](#)

[Our Clientele](#)

Gallery



[<< Back to Gallery](#)

Click on the buttons to get information of the specific Topic

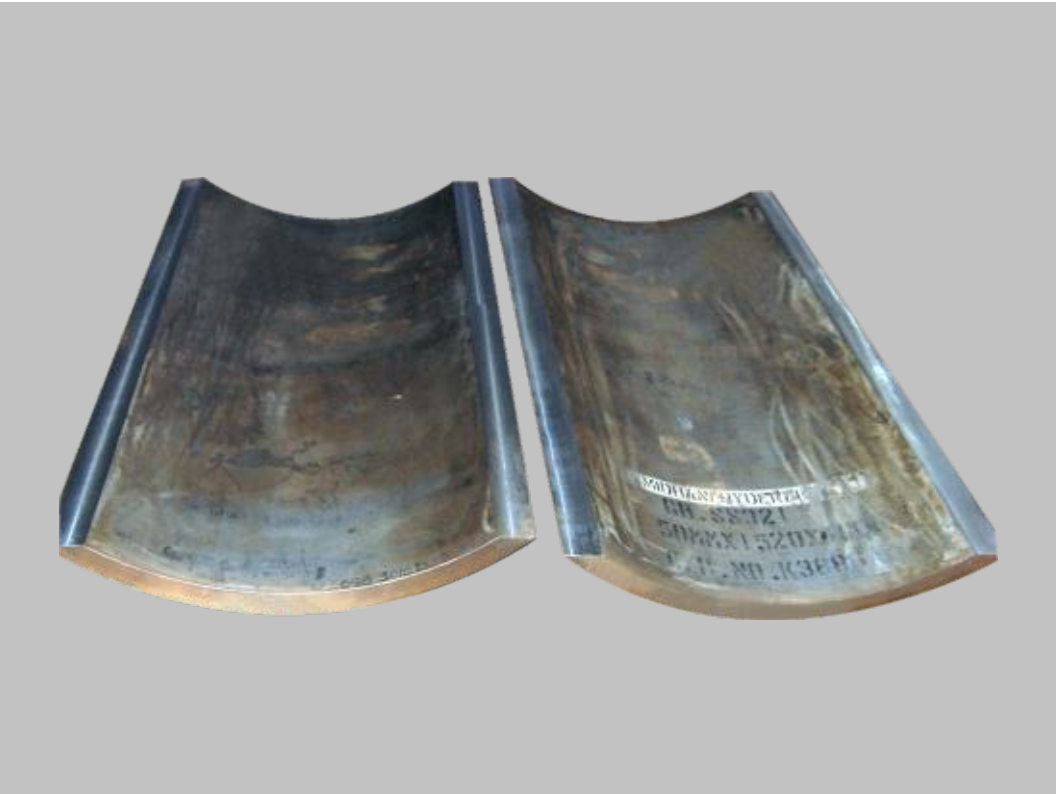


Gallery

[Profile](#)

[Machinery List](#)

[Our Clientele](#)



[<< Back to Gallery](#)



Premier Plate Fabrications Co.

| [Home](#) | [Gallery](#) | [Contact](#) | [Exit](#) |

[Profile](#)

[Machinery List](#)

[Our Clientele](#)

Gallery



[<< Back to Gallery](#)

Click on the buttons to get information of the specific Topic



Premier Plate Fabrications Co.

[| Home](#) | [Gallery](#) | [Contact](#) | [Exit](#) |

[Profile](#)

[Machinery List](#)

[Our Clientele](#)

Gallery



[<< Back to Gallery](#)

Click on the buttons to get information of the specific Topic



Premier Plate Fabrications Co.

| [Home](#) | [Gallery](#) | [Contact](#) | [Exit](#) |

[Profile](#)

[Machinery List](#)

[Our Clientele](#)

Gallery



[<< Back to Gallery](#)

Click on the buttons to get information of the specific Topic



Premier Plate Fabrications Co.

| [Home](#) | [Gallery](#) | [Contact](#) | [Exit](#) |

[Profile](#)

[Machinery List](#)

[Our Clientele](#)

Gallery



[<< Back to Gallery](#)

Click on the buttons to get information of the specific Topic



Premier Plate Fabrications Co.

| [Home](#) | [Gallery](#) | [Contact](#) | [Exit](#) |

[Profile](#)

[Machinery List](#)

[Our Clientele](#)

Gallery



[<< Back to Gallery](#)

Click on the buttons to get information of the specific Topic



Profile

Machinery List

Our Clientele

Our Clientele

Sl.No.	Customers	Job Undertaken
1.	M/s. Bharat Earth Movers Ltd., Mysore, Bangalore & KGF	Heavy Earth Moving Equipments, Rear Axle Housing Str. Draw Bar, Blade Assy, Water Sprinkler tank, & Plumbing items, Wheel disc Bellypan Str. Rear support, Dumpers & Oil tanks
2.	M/s. Bharat Heavy Electricals Ltd.,/Trichy	Pressure vessels and structurals, Boiler Accessories and Cover over engine etc.,
3.	M/s. Caterpillar India (P) Ltd.,/Tiruvallur	Water Tank Assy
4.	M/s. Instrumentation Ltd., / Palakkad	Valve bodies & Vanes
5.	M/s Hindustan Machine Tools Ltd.,/Hyderabad	ECC Gear Rims to size Od2140x320wx114thk
6.	M/s. Kerela Minerala & Metals Ltd.,/Quilon	Quick opening door assemblies, chemical Equipment and Heat Exchangers, Digestors, Waste solid cyclones. etc.,
7.	M/s. Kerela Electrtilal And Allied Engg.Co.,Ltd Kundara / Kasaragod	DC Motor bodies up to 25 KW made out of 40 thk plates (Rolling)
8.	M/s.,Kirloskar Electric Co.Ltd.,	DC & Traction Motor bodies & Heat Exchangers,



Premier Plate Fabrications Co.

[| Home](#) | [Gallery](#) | [Contact](#) | [Exit](#) |

Profile

Machinery List

Our Clientele

Our Clientele

Sl.No.	Customers	Job Undertaken
9.	M/s. Larsen & Toubro Ltd (L&T) / Chennai	Top & Bottom Steam boxes
10.	M/s. New Sahyadri Industries Ltd., / Pune	H.D. Tank, Fibre storage tank, Fibre mill shell, Fibre Mill Stand, Vacuum Water Separator tank, Batch tank for pulp, Vacuum water Recirculation tank etc.,.
11.	M/s. Neyveli Lignite Corporation Ltd.,	Heavy fabricated structires like Lower connecting plate assy for Thermal power plants. (Fabricated column single piece wt:25 tonnes) supplied recently for M/s. Ansaldo / Italy.
12.	M/s. Promac Engineering Industries Ltd.,	Cooler shell assemblies
13.	M/s. SHAR Centre / Sriharikotta	PSI GSI Segment support & Stainells steel tanks etc., Water Injection system, PSO Saddles, Susstainer rail, Spacer frame,Guides for Transformer saddles, Horizontal sliding door etc.,
14.	M/s. Transformers And Electricals Kerela Ltd., Angamally, Kerela.	Transformers tank & parts, Pressure vessels
15.	M/s. Trident Powercraft (P) Ltd., / Bangalore	Motor bodies

Click on the buttons to get information of the specific Topic



Premier Plate Fabrications Co.

[| Home](#) | [Gallery](#) | [Contact](#) | [Exit](#) |

Profile

Machinery List

Our Clientele

Our Clientele

Sl.No.	Customers	Job Undertaken
16.	M/s. Tamil Nadu Cements Corporation Ltd., Ariyalur & Alangulam	Crance Grabbing buckets, Cooler bed frame, Kiln Shells & Impellers etc.,
17.	M/s. Vikram Sarabhai Space Centre, Trivendrum	Tilting fixture, Pressusre vessels.& Vacuum Chamber etc.,
18.	M/s. Hydropneumatics, Goa	M.S/S.S Ventaries of Various Sizes
19.	M/s. Craftsman Automation (P) Ltd.,	Magnetic Sections, Barrels, etc.,
20.	M/s. Andrew Yule & Co.Ltd.,/Chennai	Transformer tanks & parts
21.	Sakthi Sugar Limited	Coimbatore
22.	Salzar Electronics Ltd	Coimbatore
23.	Auto Print Machinery Mfrs. Pvt. Ltd.	
24.	Auto Therm	
25.	Southern Petro Chemicals Industries Corp Ltd.	Tuticorin
26.	Indsil Hydro Power & Manganese Ltd	Coimbatore

Click on the buttons to get information of the specific Topic



Profile

Machinery List

Our Clientele

Our Clientele

Sl.No.	Customers	Job Undertaken
27.	Victory Electrical Ltd.	Chennai
28.	Revathi Equipment Ltd.	
29	Gas Projects India (P) Ltd.	Mumbai



Premier Plate Fabrications Co.

| [Home](#) | [Gallery](#) | [Contact](#) | [Exit](#) |

[Profile](#)

[Machinery List](#)

[Our Clientele](#)

Contact

Premier Plate Fabrications Co.

355/1-B, ABBAS Gardens,
(Near TVS Nagar)
Thadagam Road,
Coimbatore - 641 025

Tel. : +91-422-2401490

Fax.: +91-422-2404113

Mobile : MD : Mr.S.M. SADHASIVAM : 9600917223
9843017223

Mobile : Senior Engineer : 9600937223

Email : info@premierplatefabrications.net

premierplatefabrications@yahoo.co.in

Website : www.premierplatefabrications.net